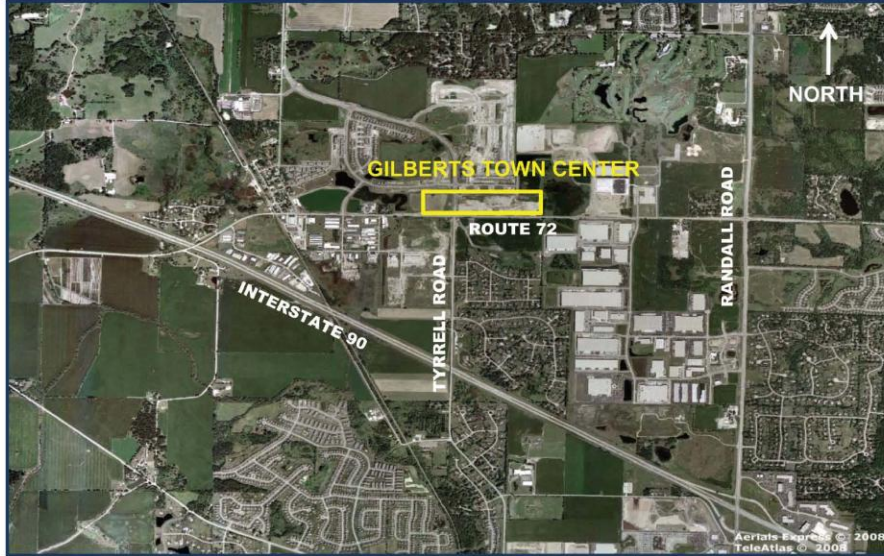


GILBERTS TOWN CENTER GILBERTS, IL



DEMOGRAPHIC SUMMARY

2007 Estimated Population		2012 Projected Population		Total Household Expenditure (in Millions)	
3 mile	23,522	3 mile	29,153	3 mile	\$508.5
5 mile	89,758	5 mile	105,645	5 mile	\$1,854.4
2007 Average Household Income		2007 Estimated Households		2012 Projected Households	
3 mile	\$94,149	3 mile	7,459	3 mile	9,020
5 mile	\$83,705	5 mile	29,714	5 mile	34,207

TRAFFIC COUNTS

Route 72 (Higgins) and Tyrrell Road
13,500 Vehicles Per Day
 *www.gettingaroundillinois.com

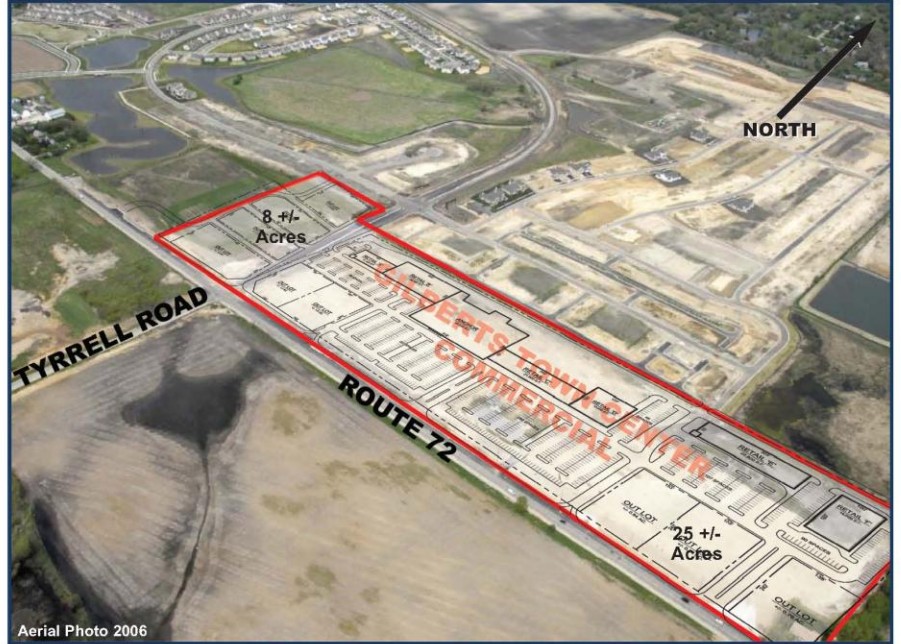
PAR DEVELOPMENT, INC.

Disclaimer: The information contained in this brochure has been obtained from sources believed reliable. While we do not doubt its accuracy, we have not verified it and make no guarantee, warranty or representation about it. All prices and information are subject to change without notice.

For information, contact:

Par Development, Inc.
 12040 Raymond Court
 Huntley, IL 60142
 (847) 854-3005 ext. 237
 www.pardevelopment.com

GILBERTS TOWN CENTER GILBERTS, IL



Aerial Photo 2006

**LAND AVAILABLE
 FOR SALE,
 FOR LEASE &
 BUILD-TO-SUIT
 AVAILABLE NOW**

For Information, contact:
 Par Development, Inc.
 12040 Raymond Court
 Huntley, IL 60142
 (847) 854-3005 ext. 237
 www.pardevelopment.com

LOCATION

- Located on approximately 33 +/- acres at the Northeast and Northwest Signalized Quadrants of Tyrrell Road and Route 72 (Higgins Road)
- One Mile West of Randall Road

SITE INFO

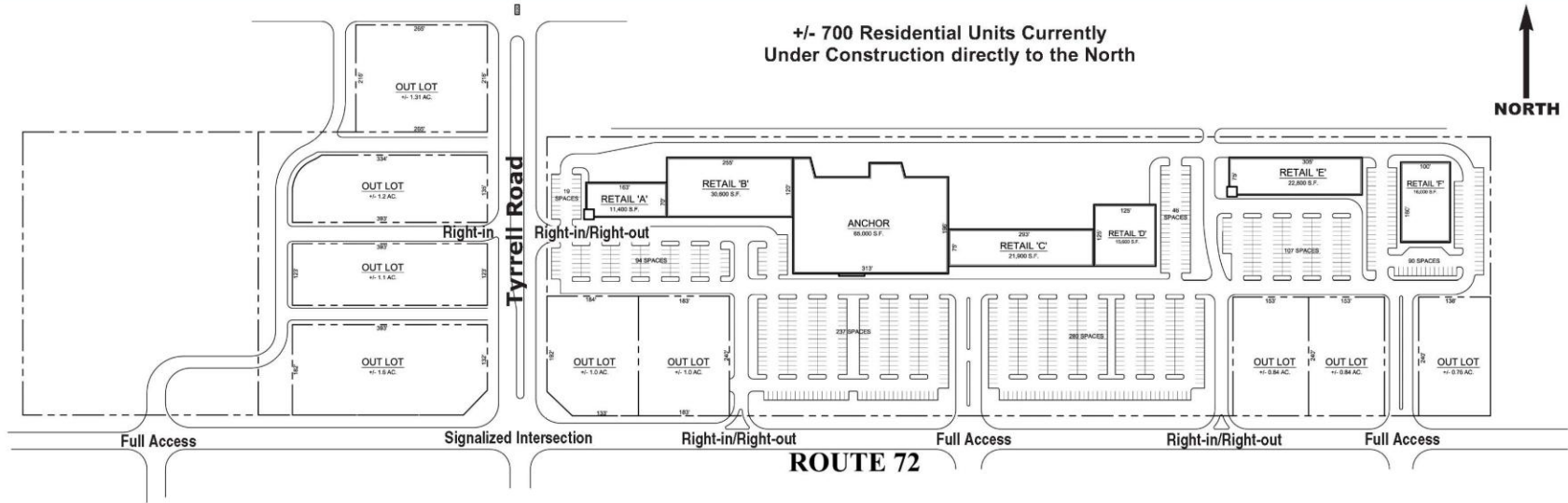
- Annexed into the Village of Gilberts
- Zoned for Retail/Commercial Use - C-1
- Water and Sanitary Services to the Site

PAR DEVELOPMENT, INC.

**+/- 33 Acres of Prime
Retail/Commercial Land**

**GILBERTS TOWN CENTER
GILBERTS, IL**

**AVAILABLE IMMEDIATELY
(847) 854-3005 ext. 237**

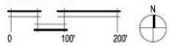


+/- 700 Residential Units Currently Under Construction directly to the North



SITE PLAN

SCALE: 1"=200'



ACCESS

- Adjacent to Signalized Intersection of Route 72 and Tyrrell Road
- Full and Right-in/Right-out access along Route 72 and Tyrrell Road

SITE INFORMATION

- All Lots are Net Detention
- Water and Sanitary Stubbed to the Site
- One Mile West of Randall Road
- +/- 8 Acres West of Tyrrell Road
- +/- 25 Acres East of Tyrrell Road
- Site has been Mass Graded

ANCHOR	65,000 SF
RETAIL 'A'	11,400 SF
RETAIL 'B'	30,600 SF
RETAIL 'C'	21,900 SF
RETAIL 'D'	15,600 SF
RETAIL 'E'	22,800 SF
RETAIL 'F'	16,000 SF
TOTAL GLA	183,300 SF
PARKING PROVIDED	
SPACES	873 SPACES
RATIO	4.76 / 1,000 SF

PAR DEVELOPMENT, INC.

**(847) 854-3005 ext. 237
www.pardevelopment.com**

All buildings are conceptual