



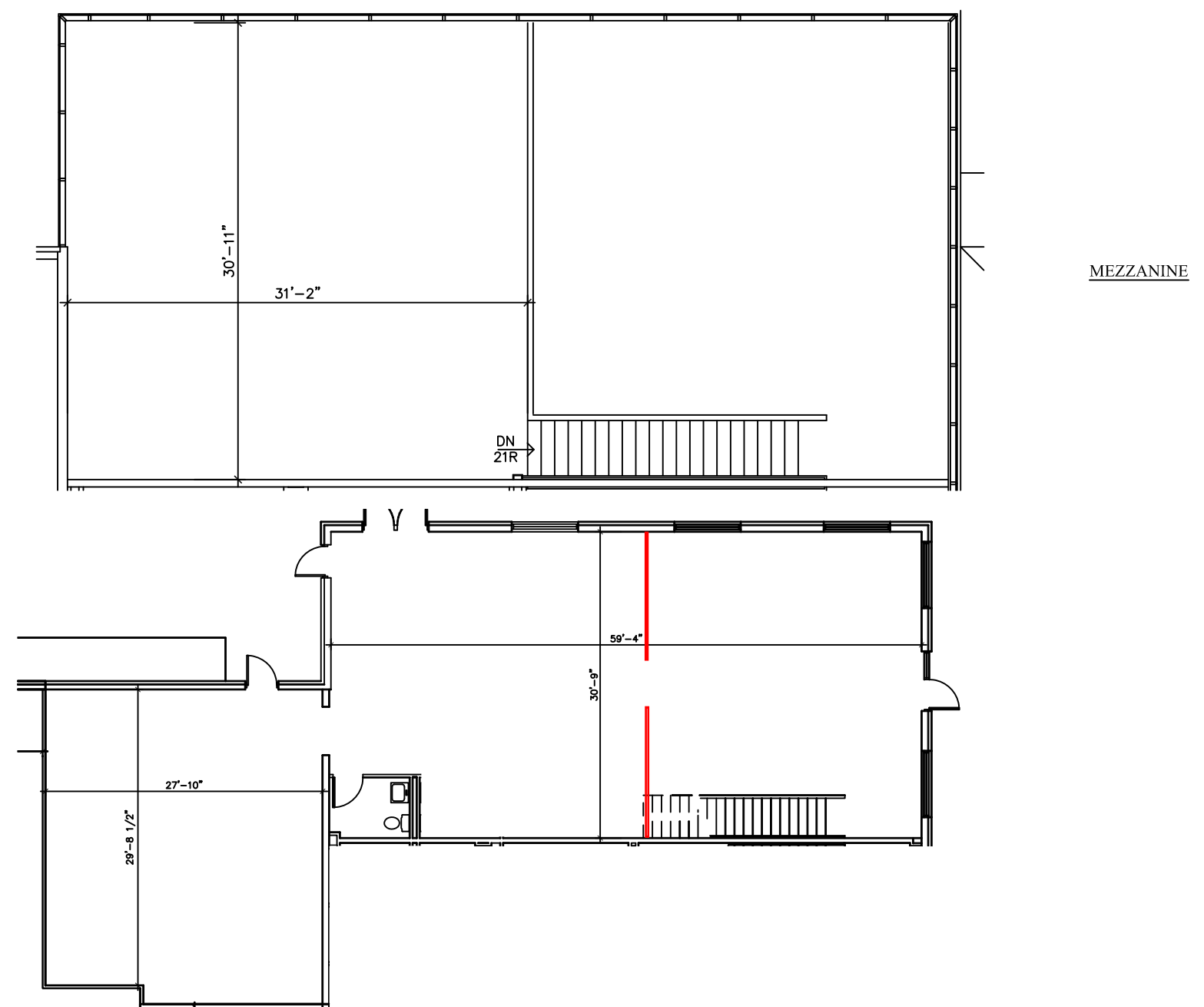
  
**PLOTE PROPERTY MANAGEMENT, LLC**

**LEASING INFORMATION:**

1141 E.Main St., Suite 100  
East Dundee, IL 60118

**847-428-1000**

[www.ploteproperties.com](http://www.ploteproperties.com)

**SUITE FEATURES:**

- 20' MIN CEILING CLEARANCE
- 200 AMP 120/208V 3-PHASE POWER
- NATURAL GAS SERVICE
- GAS HEATING AND ELECTRICAL COOLING IN OFFICE
- GAS UNIT HEATER IN WAREHOUSE
- FULLY SPRINKLED

**BUILDING FEATURES:**

- MASONRY BEARING WALLS WITH BRICK VENEER FACADE
- STRUCTURAL STEEL FRAMING
- CMU DEMISING WALLS
- SEALED CONCRETE SLAB FLOORS
- INSULATED GLASS IN ALUMINUM FRAMES WITH THERMAL BREAK
- INSULATED STEEL MAN AND OVERHEAD DOORS
- FIRE SPRINKLER SYSTEM
- FULL BUILDING FIRE ALARM SYSTEM
- DIRECT EXTERIOR ACCESS

**SITE FEATURES:**

- CITY WATER AND SEWER
- ASPHALT PAVED FRONT PARKING LOT WITH SIDEWALK
- HEAVY DUTY ASPHALT PAVED LOADING AREA
- INDIVIDUAL AND COMMON DEPRESSED LOADING DOCKS W/CONCRETE PAVEMENT AND APRONS
- STORM MANAGEMENT SYSTEM
- MAINTAINED LANDSCAPING

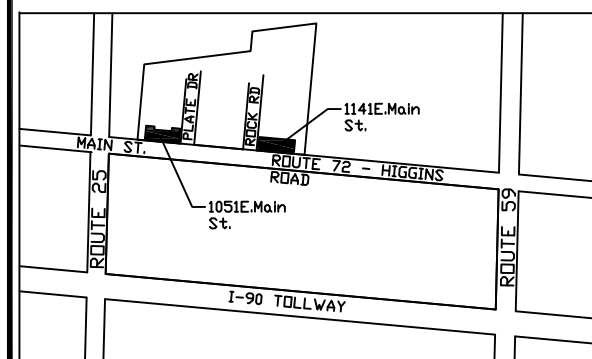
SUITE AREAS ARE CALCULATED BASED ON FIELD VERIFICATION - MARCH 2012 AND ARE MEASURED TO THE EXTERIOR FACE OF PERIMETER WALLS AND TO CENTER OF DEMISING WALLS

DATE : 11/30/2012

SCALE : 1/8" = 1'-0"

**Unit 500**

1061 E. Main Street  
East Dundee, Illinois



**TENANT "500" FLOOR PLAN**  
**3,820 S.F.**