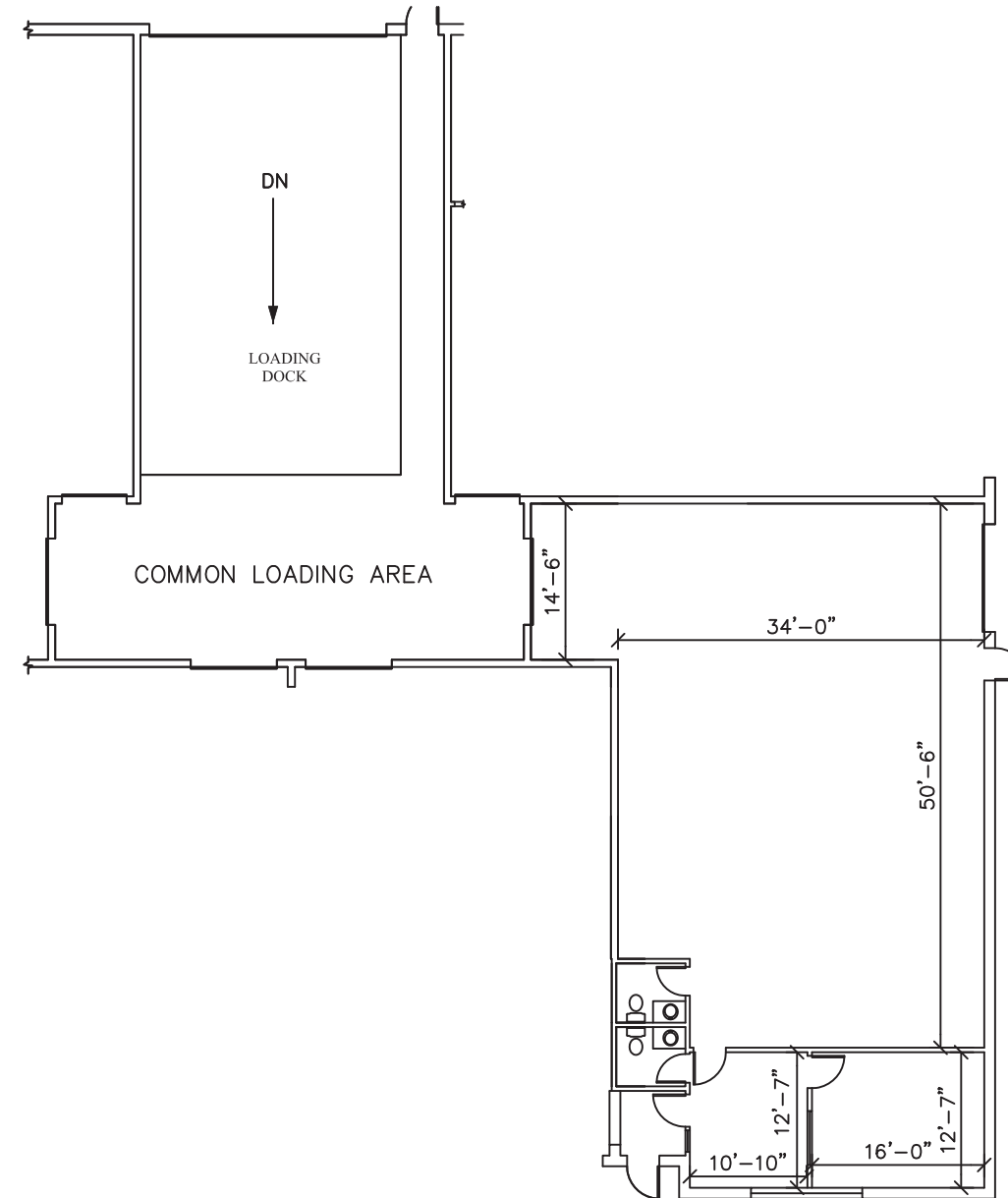

PLOTE PROPERTY MANAGEMENT, LLC

LEASING INFORMATION:

1141 E.Main St., Suite 100
East Dundee, IL 60118

847-428-1000

www.ploteproperties.com

**SUITE FEATURES:**

- 18' MIN CEILING CLEARANCE
- OVER HEAD DRIVE-IN DOOR
- ACCESS TO COMMON LOADING DOCK
- 200 AMP 120/208V 3-PHASE POWER
- NATURAL GAS SERVICE
- GAS HEATING AND ELECTRICAL COOLING IN OFFICE
- GAS UNIT HEATER IN WAREHOUSE

BUILDING FEATURES:

- MASONRY BEARING WALLS WITH BRICK VENEER FACADE
- STRUCTURAL STEEL FRAMING
- CMU DEMISING WALLS
- SEALED CONCRETE SLAB FLOORS
- INSULATED GLASS IN ALUMINUM FRAMES WITH THERMAL BREAK
- INSULATED STEEL MAN AND OVERHEAD DOORS
- FULL BUILDING FIRE ALARM SYSTEM
- DIRECT EXTERIOR ACCESS

SITE FEATURES:

- CITY WATER AND SEWER
- ASPHALT PAVED FRONT PARKING LOT WITH SIDEWALK
- HEAVY DUTY ASPHALT PAVED LOADING AREA
- INDIVIDUAL AND COMMON DEPRESSED LOADING DOCKS W/CONCRETE PAVEMENT AND APRONS
- STORM MANAGEMENT SYSTEM
- MAINTAINED LANDSCAPING

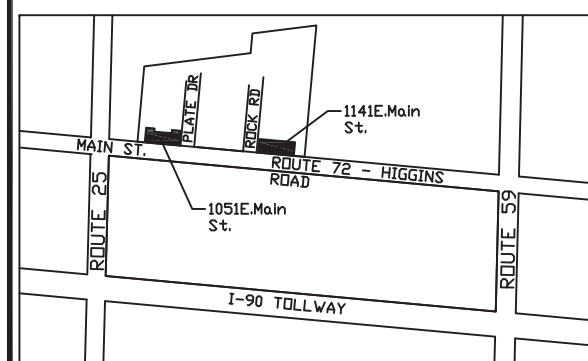
SUITE AREAS ARE CALCULATED BASED ON FIELD VERIFICATION - MARCH 2012 AND ARE MEASURED TO THE EXTERIOR FACE OF PERIMETER WALLS AND TO CENTER OF DEMISING WALLS

DATE : 1/2/2013

SCALE : 1/16" = 1'-0"

Unit 4

1108 Heinz Drive
East Dundee, Illinois

**TENANT "4" FLOOR PLAN**

2,397 UNIT S.F.

381 COMMON AREA S.F.

2,778 TOTAL S.F.