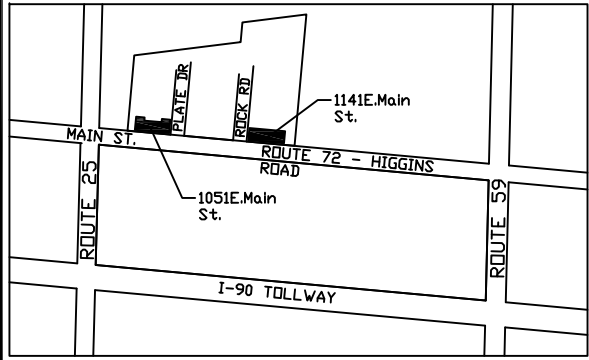
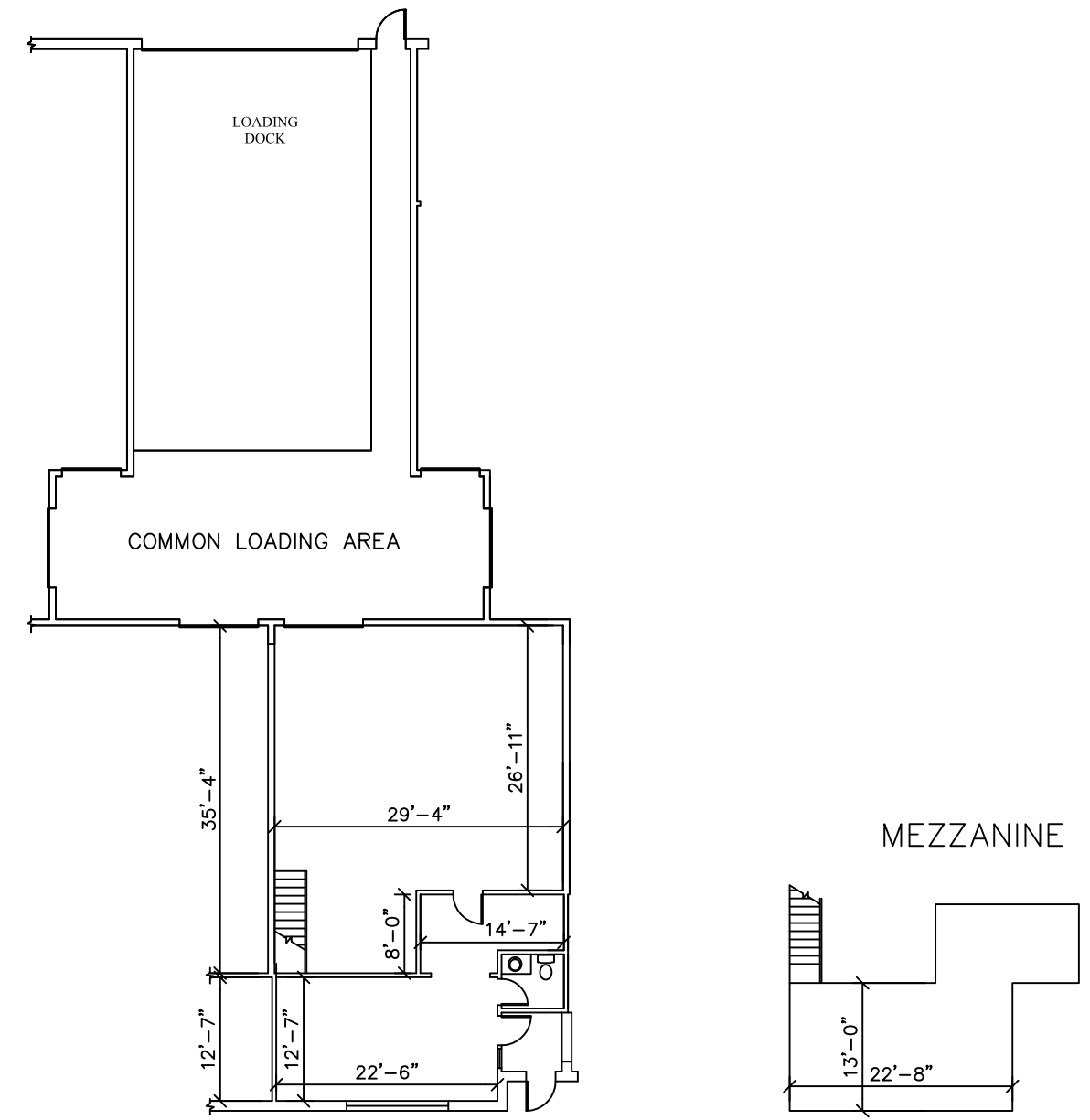




  
**PLOTE PROPERTY MANAGEMENT, LLC**

**LEASING INFORMATION:**  
 1141 E.Main St., Suite 100  
 East Dundee, IL 60118  
**847-428-1000**  
 www.ploteproperties.com



**TENANT "3" FLOOR PLAN**  
**1,470 UNIT S.F.**  
 234 COMMON AREA S.F.  
 1,704 TOTAL S.F.

- SUITE FEATURES:**
- 18' MIN CEILING CLEARANCE
  - ACCESS TO COMMON LOADING DOCK
  - 200 AMP 120/208V 3-PHASE POWER
  - NATURAL GAS SERVICE
  - GAS HEATING AND ELECTRICAL COOLING IN OFFICE
  - GAS UNIT HEATER IN WAREHOUSE

- 1ST FLOOR BUILDING FEATURES:**
- MASONRY BEARING WALLS WITH BRICK VENEER FACADE
  - STRUCTURAL STEEL FRAMING
  - CMU DEMISING WALLS
  - SEALED CONCRETE SLAB FLOORS
  - INSULATED GLASS IN ALUMINUM FRAMES WITH THERMAL BREAK
  - INSULATED STEEL MAN AND OVERHEAD DOORS
  - FULL BUILDING FIRE ALARM SYSTEM
  - DIRECT EXTERIOR ACCESS

- SITE FEATURES:**
- CITY WATER AND SEWER
  - ASPHALT PAVED FRONT PARKING LOT WITH SIDEWALK
  - HEAVY DUTY ASPHALT PAVED LOADING AREA
  - INDIVIDUAL AND COMMON DEPRESSED LOADING DOCKS W/CONCRETE PAVEMENT AND APRONS
  - STORM MANAGEMENT SYSTEM
  - MAINTAINED LANDSCAPING

SUITE AREAS ARE CALCULATED BASED ON FIELD VERIFICATION - MARCH 2012 AND ARE MEASURED TO THE EXTERIOR FACE OF PERIMETER WALLS AND TO CENTER OF DEMISING WALLS

DATE : 1/2/2013

SCALE : 1/16" = 1'-0"

**Unit 3**  
 1108 Heinz Drive  
 East Dundee, Illinois