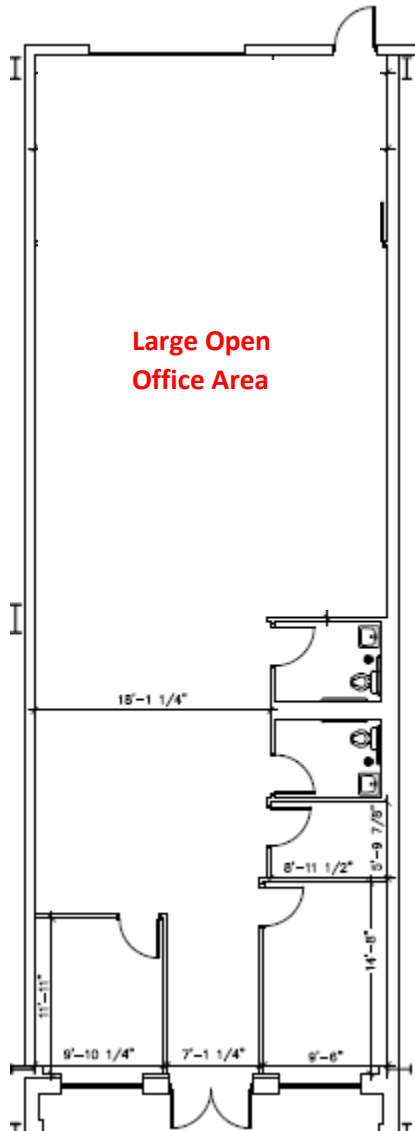


1141 E. Main Street, Unit 106
East Dundee, IL
2,238 SQFT

Option 1 – Existing OFFICE Layout
2,238 SQFT Office with 2 Private Offices
and Large Open Office Area w/ Kitchenette



12' x 14' Drive-In Garage Door
Park Inside During the Winter!



Option 2 – OFFICE with Warehouse/Storage Area
+/- 1,078 SQFT Office with 2 Private Offices
+/- 1,160 SQFT Warehouse Area 43' deep x 27' wide

