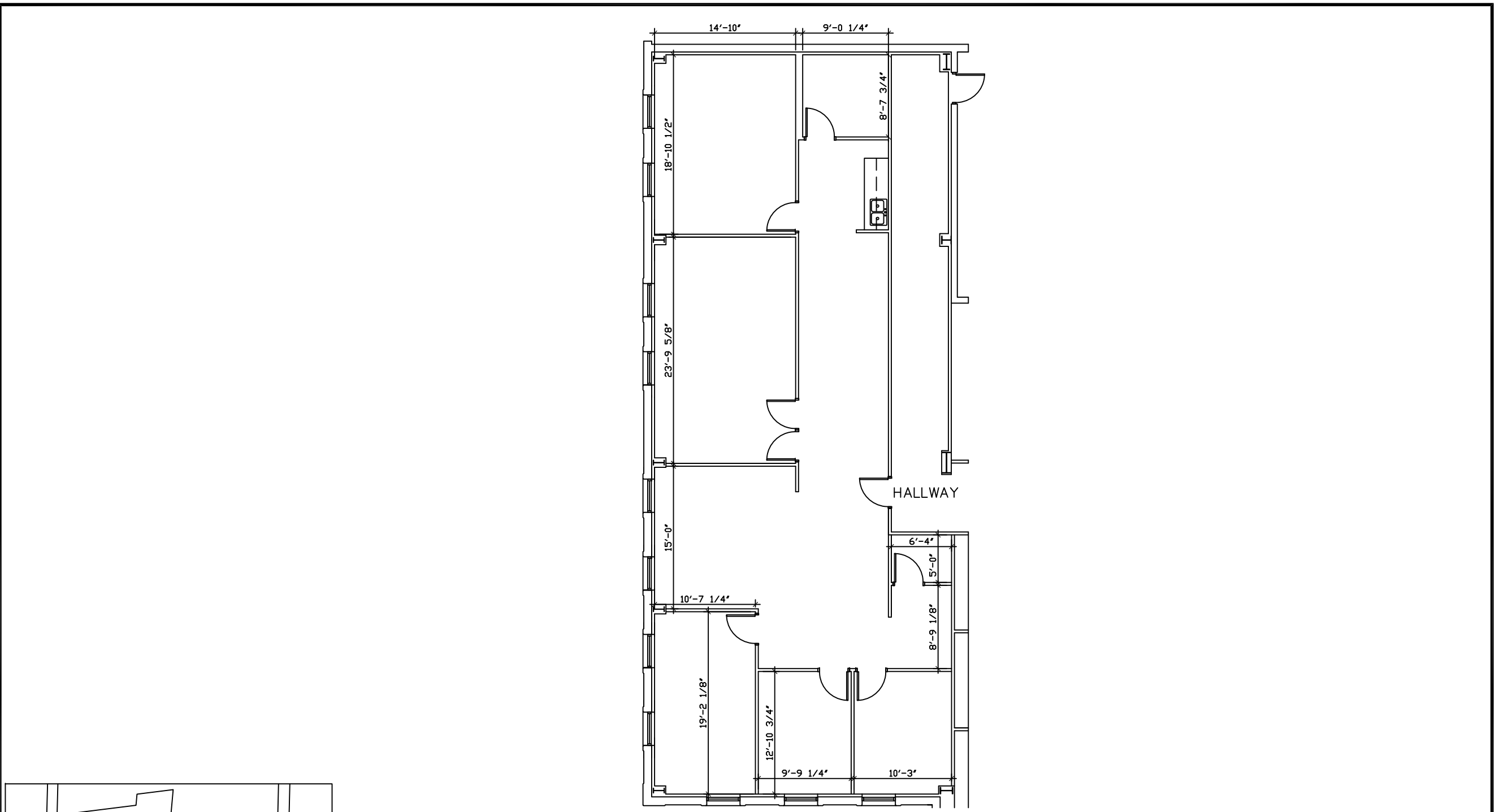


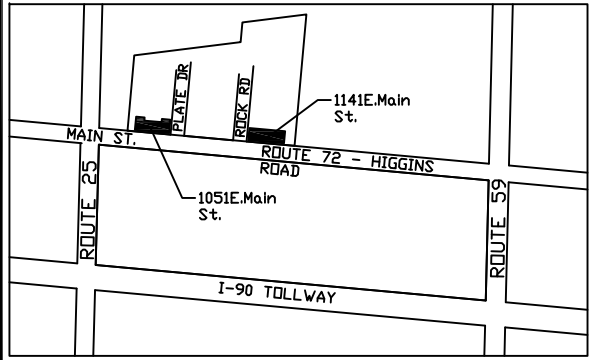


  
**PLOTE PROPERTY MANAGEMENT, LLC**

**LEASING INFORMATION:**  
 1141 E.Main St., Suite 100  
 East Dundee, IL 60118  
**847-428-1000**  
[www.ploteproperties.com](http://www.ploteproperties.com)



**SUITE "201" FLOOR PLAN**  
**2,416 S.F.**



- SUITE FEATURES:**
- 200 AMP 120/208V 3-PHASE POWER
  - 9' CEILINGS
  - GAS HEATING AND ELECTRICAL HEATING IN OFFICE
  - PRIVATE OFFICES WITH WINDOWS
  - FULLY SPRINKLED
- BUILDING FEATURES:**
- MASONRY BEARING WALLS WITH BRICK VENEER FACADE
  - STRUCTURAL STEEL FRAMING
  - CMU DEMISING WALLS
  - SEALED CONCRETE SLAB FLOORS
  - INSULATED GLASS IN ALUMINUM FRAMES WITH THERMAL BREAK
  - INSULATED STEEL MAN AND OVERHEAD DOORS
  - FIRE SPRINKLER SYSTEM
  - FULL BUILDING FIRE ALARM SYSTEM
  - DIRECT EXTERIOR ACCESS
- SITE FEATURES:**
- CITY WATER AND SEWER
  - ASPHALT PAVED FRONT PARKING LOT WITH SIDEWALK
  - HEAVY DUTY ASPHALT PAVED LOADING AREA
  - INDIVIDUAL AND COMMON DEPRESSED LOADING DOCKS W/CONCRETE PAVEMENT AND APRONS
  - STORM MANAGEMENT SYSTEM
  - MAINTAINED LANDSCAPING
- SUITE AREAS ARE CALCULATED BASED ON FIELD VERIFICATION - MARCH 2012 AND ARE MEASURED TO THE EXTERIOR FACE OF PERIMETER WALLS AND TO CENTER OF DEMISING WALLS

DATE : 11/16/2012

SCALE : 1" = 10'-0"

**Suite 201**  
 1141 E. Main Street  
 East Dundee, Illinois