



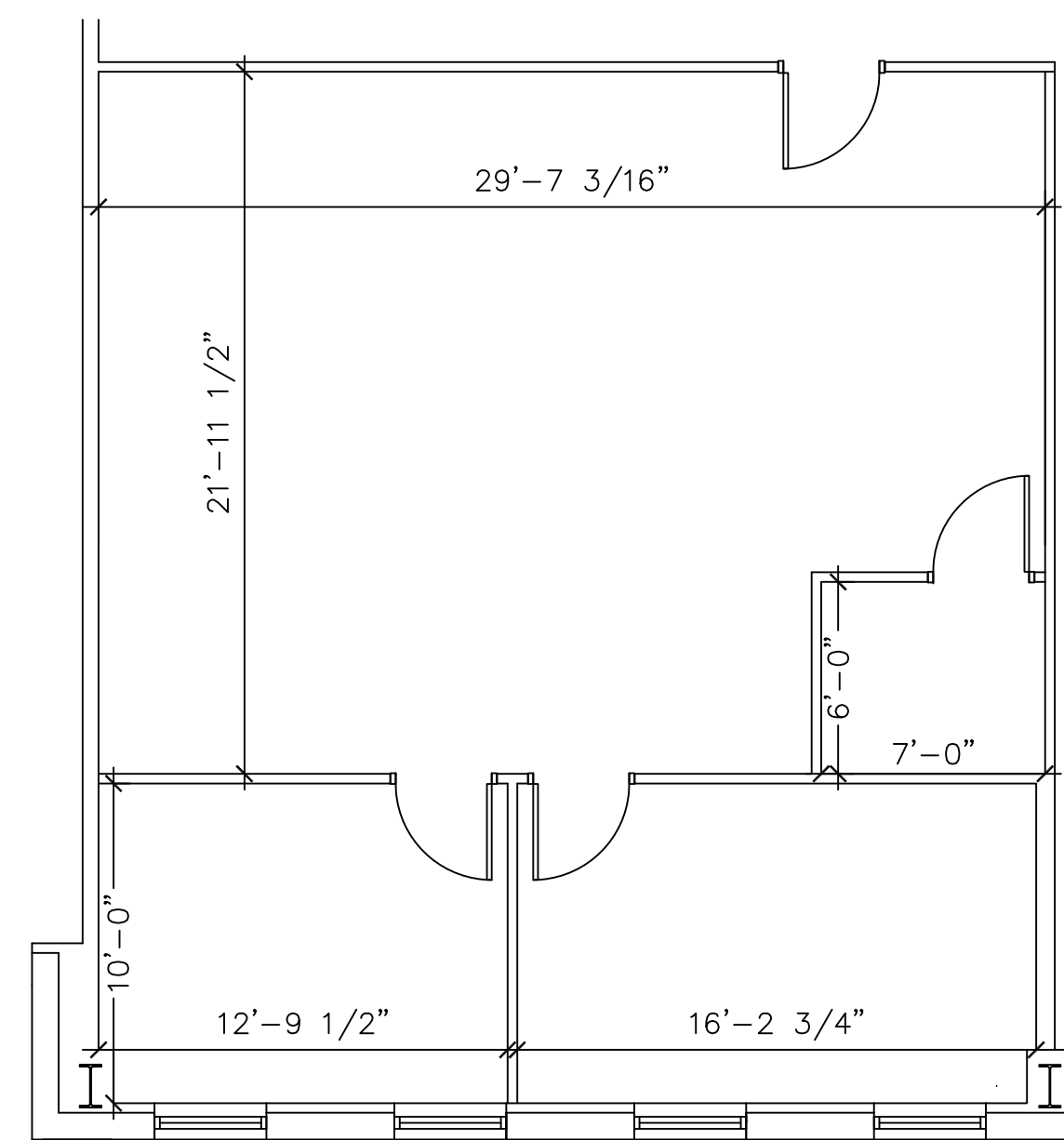
# PLOTE PROPERTY MANAGEMENT, LLC

### LEASING INFORMATION:

1141 E.Main St., Suite 100  
East Dundee, IL 60118

**847-428-1000**

[www.ploteproperties.com](http://www.ploteproperties.com)



### SUITE FEATURES:

- 200 AMP 120/208V 3-PHASE POWER
- 9' CEILINGS
- GAS HEATING AND ELECTRICAL HEATING IN OFFICE
- PRIVATE OFFICES WITH WINDOWS FULLY SPRINKLED

### BUILDING FEATURES:

- MASONRY BEARING WALLS WITH BRICK VENEER FACADE
- STRUCTURAL STEEL FRAMING
- CMU DEMISING WALLS
- SEALED CONCRETE SLAB FLOORS
- INSULATED GLASS IN ALUMINUM FRAMES WITH THERMAL BREAK
- INSULATED STEEL MAN AND OVERHEAD DOORS
- FIRE SPRINKLER SYSTEM
- FULL BUILDING FIRE ALARM SYSTEM
- DIRECT EXTERIOR ACCESS

### SITE FEATURES:

- CITY WATER AND SEWER
- ASPHALT PAVED FRONT PARKING LOT WITH SIDEWALK
- HEAVY DUTY ASPHALT PAVED LOADING AREA
- INDIVIDUAL AND COMMON DEPRESSED LOADING DOCKS W/CONCRETE PAVEMENT AND APRONS
- STORM MANAGEMENT SYSTEM
- MAINTAINED LANDSCAPING

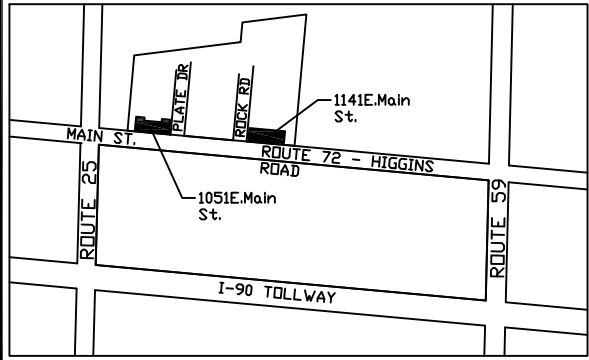
SUITE AREAS ARE CALCULATED BASED ON FIELD VERIFICATION - MARCH 2012 AND ARE MEASURED TO THE EXTERIOR FACE OF PERIMETER WALLS AND TO CENTER OF DEMISING WALLS

DATE : 8/7/2013

SCALE : 1" = 10'-0"

## Suite 209

1141 E. Main Street  
East Dundee, Illinois



## SUITE "209" FLOOR PLAN

1,029 SF