



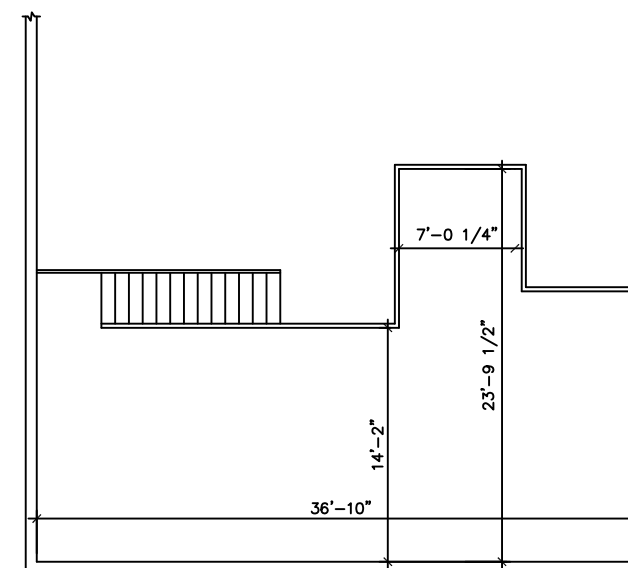
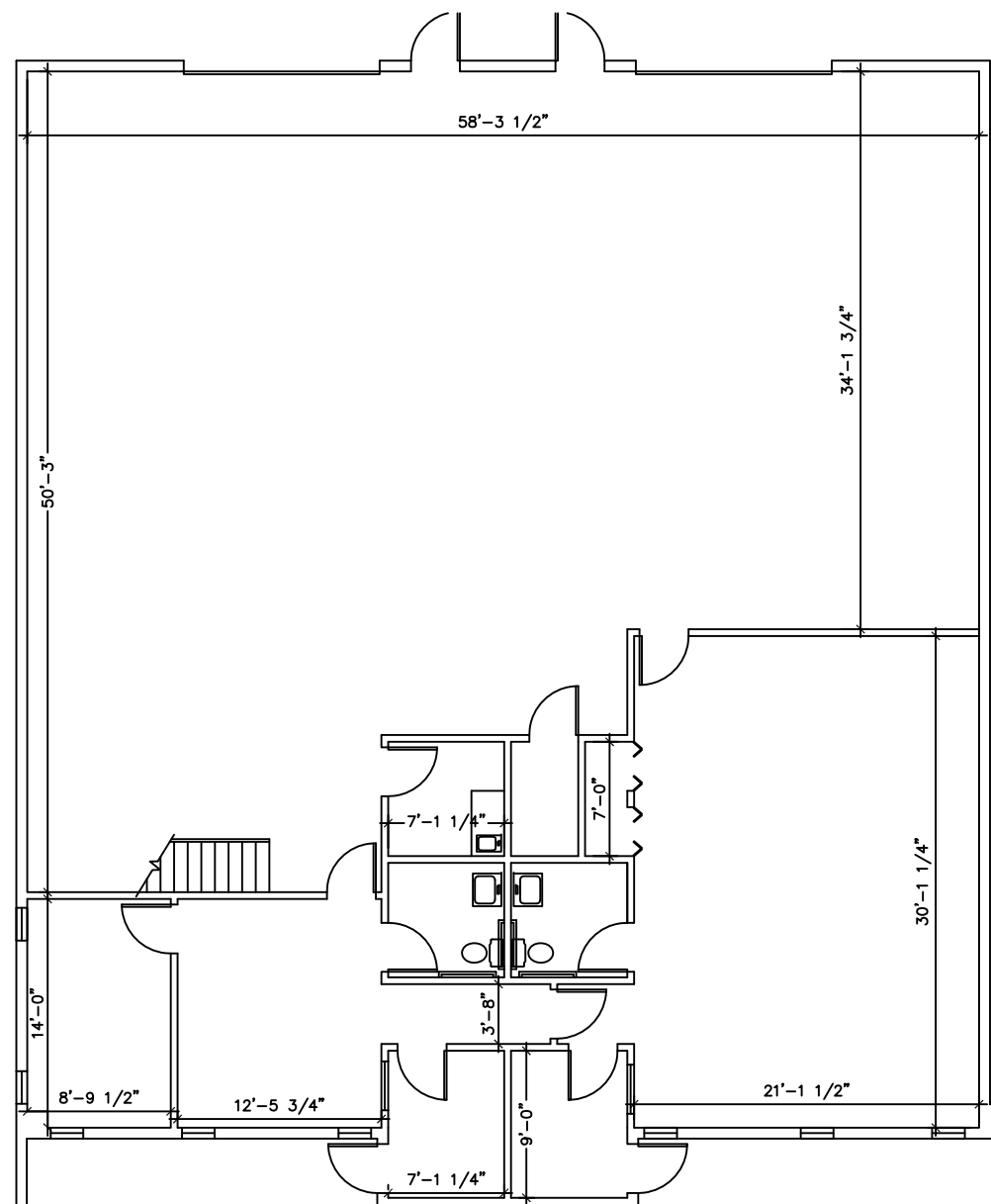
PLOTE PROPERTY MANAGEMENT, LLC

LEASING INFORMATION:

1141 E.Main St., Suite 100
East Dundee, IL 60118

847-428-1000

www.ploteproperties.com



MEZZANINE

SUITE FEATURES:

- 20' MIN CLEARANCE CEILING
- 12'x14' DRIVE IN DOOR W/OPERATER
- TRENCH DRAIN IN WAREHOUSE
- NATURAL GAS SERVICE
- 200AMP 120/208V 3ph ELECTRIC
- GAS HEAT AND ELECTRIC COOLING IN OFFICE
- GAS UNIT HEATING IN WAREHOUSE

BUILDING FEATURES:

- MASONRY BEARING WALLS WITH BRICK VENEER FACADE
- STRUCTURAL STEEL FRAMING
- CMU DEMISING WALLS
- SEALED CONCRETE SLAB FLOORS
- INSULATED GLASS IN ALUMINUM FRAMES WITH THERMAL BREAK
- INSULATED STEEL MAN AND OVERHEAD DOORS
- FIRE SPRINKLER SYSTEM
- FULL BUILDING FIRE ALARM SYSTEM
- DIRECT EXTERIOR ACCESS

SITE FEATURES:

- CITY WATER AND SEWER
- ASPHALT PAVED FRONT PARKING LOT WITH SIDEWALK
- HEAVY DUTY ASPHALT PAVED LOADING AREA
- INDIVIDUAL AND COMMON DEPRESSED LOADING DOCKS W/CONCRETE PAVEMENT AND APRONS
- STORM MANAGEMENT SYSTEM
- MAINTAINED LANDSCAPING

SUITE AREAS ARE CALCULATED BASED ON FIELD VERIFICATION - MARCH 2012 AND ARE MEASURED TO THE EXTERIOR FACE OF PERIMETER WALLS AND TO CENTER OF DEMISING WALLS

DATE : 6/26/2013

SCALE : 3/32"=1'-0"

UNIT 1&2
555 Plate Drive
East Dundee, Illinois

TENANT "1&2" FLOOR PLAN

3,956 S.F.

