



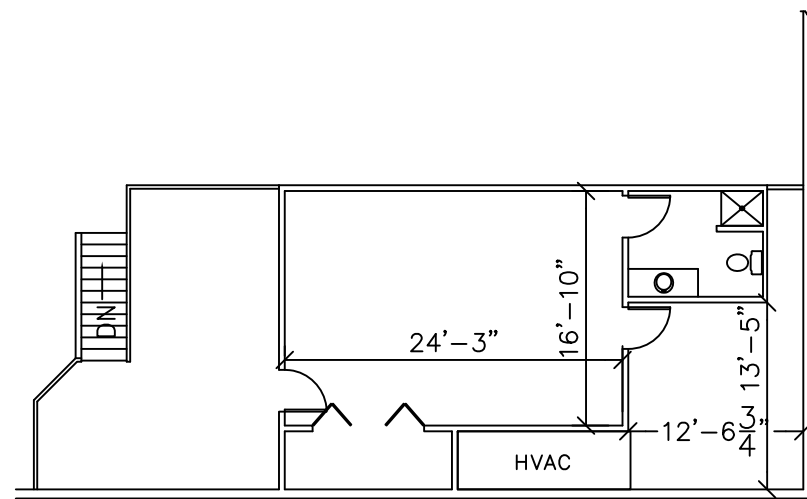
# PLOTE PROPERTY MANAGEMENT, LLC

## LEASING INFORMATION:

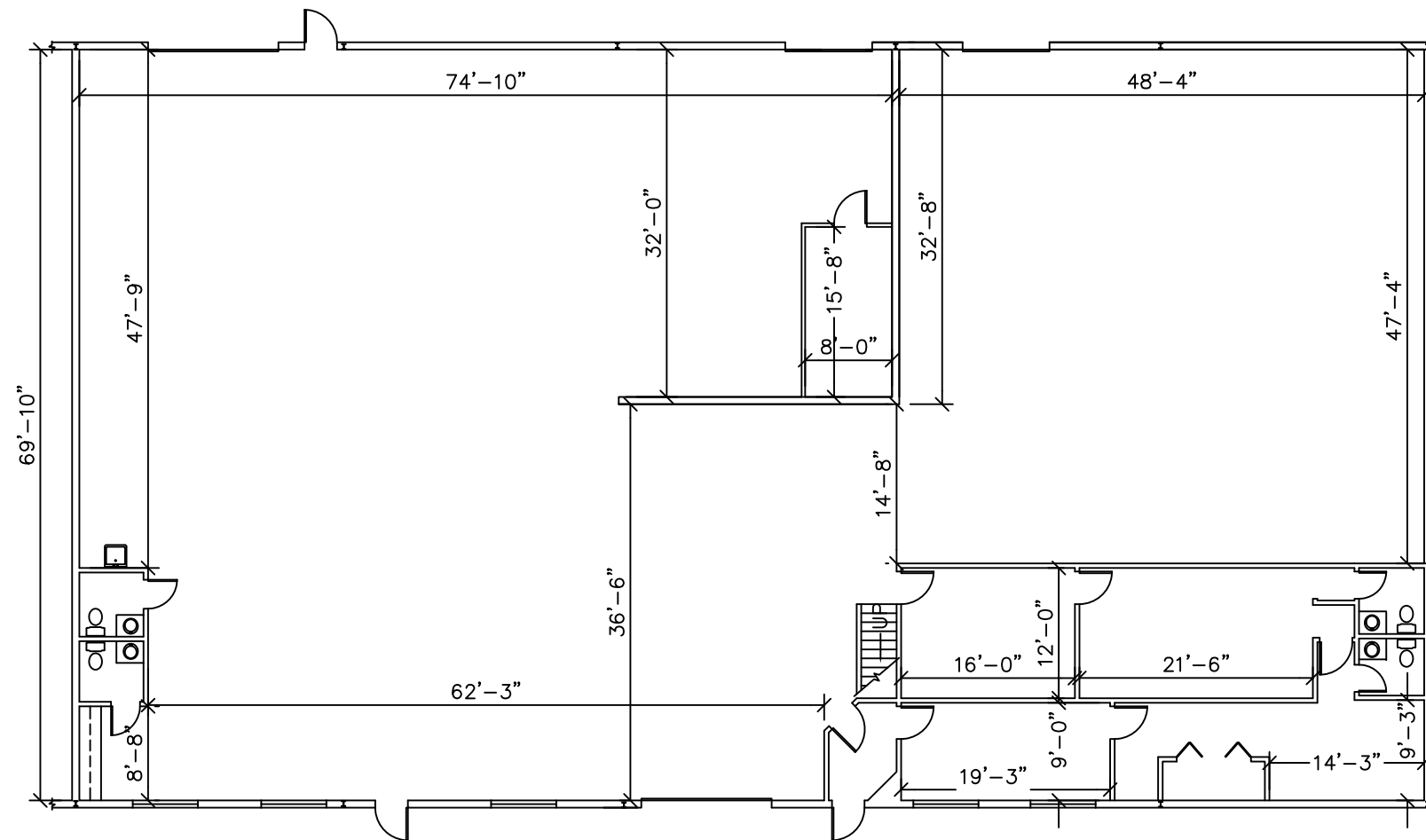
1141 E.Main St., Suite 100  
East Dundee, IL 60118

**847-428-1000**

[www.ploteproperties.com](http://www.ploteproperties.com)



MEZZANINE



## TENANT "D & E" FLOOR PLAN

### SUITE FEATURES:

- 20' MIN. CLEAR HEIGHT
- 12'X14' MOTOR OPERATED DRIVE IN DOORS
- NATURAL GAS SERVICE & METER
- 200 amp 120/208V 3PH 100A EL. PANELS
- GAS UNIT HEATER IN WAREHOUSE
- GAS HEATING AND ELECTRIC COOLING IN OFFICE
- FULLY SPRINKLED

### BUILDING FEATURES:

- MASONRY BEARING WALLS WITH BRICK VENEER FACADE
- STRUCTURAL STEEL FRAMING
- CMU DEMISING WALLS
- SEALED CONCRETE SLAB FLOORS
- INSULATED GLASS IN ALUMINUM FRAMES WITH THERMAL BREAK
- INSULATED STEEL MAN AND OVERHEAD DOORS
- FIRE SPRINKLER SYSTEM
- FULL BUILDING FIRE ALARM SYSTEM
- DIRECT EXTERIOR ACCESS

### SITE FEATURES:

- CITY WATER AND SEWER
- ASPHALT PAVED FRONT PARKING LOT WITH SIDEWALK
- HEAVY DUTY ASPHALT PAVED LOADING AREA
- INDIVIDUAL AND COMMON DEPRESSED LOADING DOCKS W/CONCRETE PAVEMENT AND APRONS
- STORM MANAGEMENT SYSTEM
- MAINTAINED LANDSCAPING

SUITE AREAS ARE CALCULATED BASED ON FIELD VERIFICATION - MARCH 2012 AND ARE MEASURED TO THE EXTERIOR FACE OF PERIMETER WALLS AND TO CENTER OF DEMISING WALLS

DATE : 1/10/2013

SCALE : 1/16" = 1'-0"

### Unit D & E

11414 Smith Drive  
Huntley, Illinois

