

# FOR LEASE

800 Dundee Ave. (Route 25)  
East Dundee, IL

**PLOTE PROPERTIES**

Adam Neisendorf  
(847) 428-1000 ext. 228  
aneisendorf@ploteproperties.com



**Lot Size:** 6.18 acres

**SQFT:** **29,963 SQFT** + 1,500 SQFT mezzanine storage area

**Zoning:** B-4 Automotive Service Business District – Car Sales

Ownership is open to other uses such as equipment sales, equipment rental, truck dealerships, RV dealerships, trailers sales, automotive repair, and collision repair, etc.

**Parking:** Approximately 275 vehicle parking spaces + 0.5 acre gravel storage yard

**Power:** 1,200 AMPS of 277/480V - 3 phase

**Features:** Steel and Masonry Construction

Security Alarm System

Fire Alarm and Fire Sprinkler

**Age:** Built in 1990, renovated in 2016

New Roof November 2014

**Location:** Located on IL Route 25 (Dundee Ave) in East Dundee, IL, Kane County  
1.5 miles from the full interchange at I-90 and Rt 25.

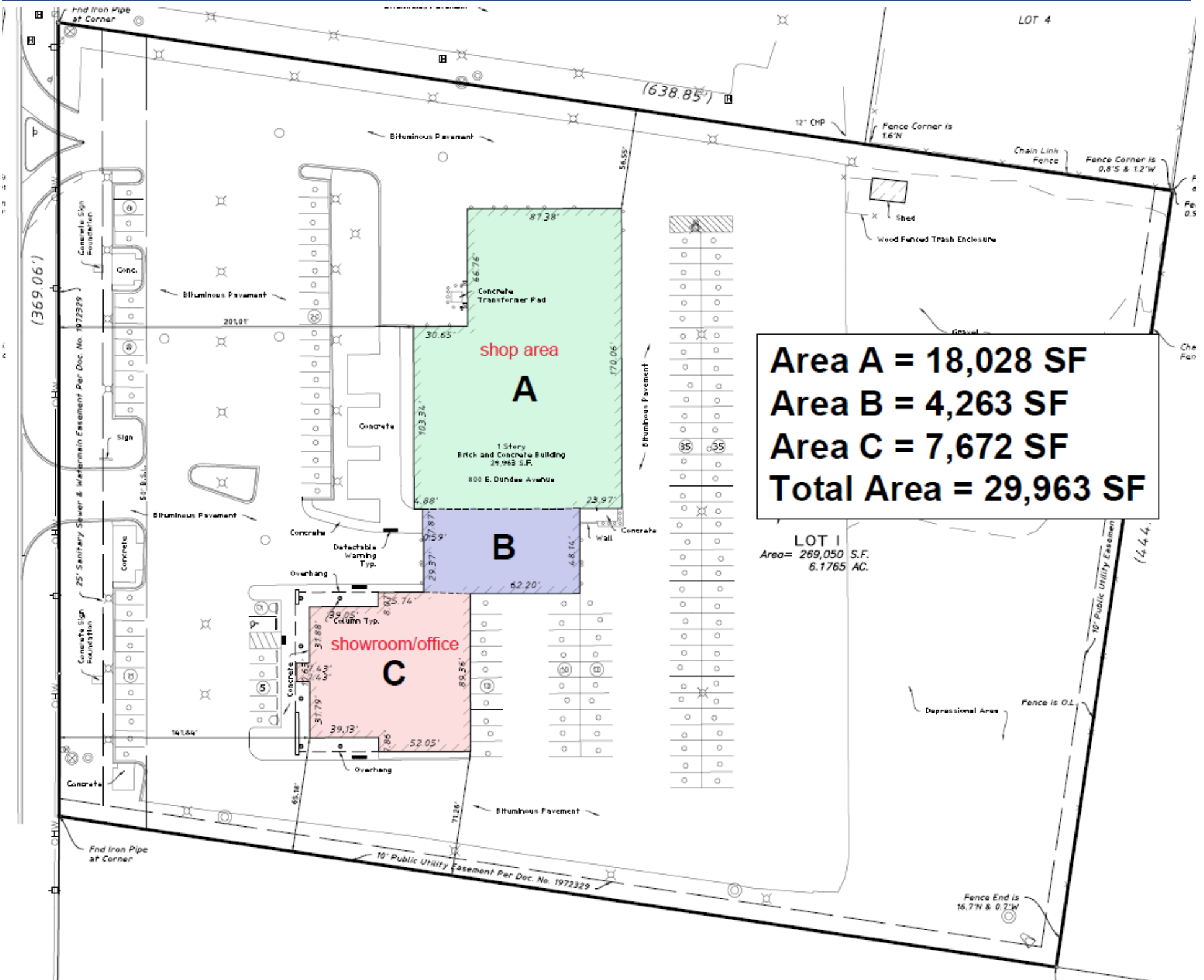
**25 minutes to O'Hare Airport via I-90**

# FOR LEASE

800 Dundee Ave. (Route 25)  
East Dundee, IL



Adam Neisendorf  
(847) 428-1000 ext. 228  
aneisendorf@ploteproperties.com



# FOR LEASE

800 Dundee Ave. (Route 25)  
East Dundee, IL



Adam Neisendorf  
(847) 428-1000 ext. 228  
aneisendorf@ploteproperties.com

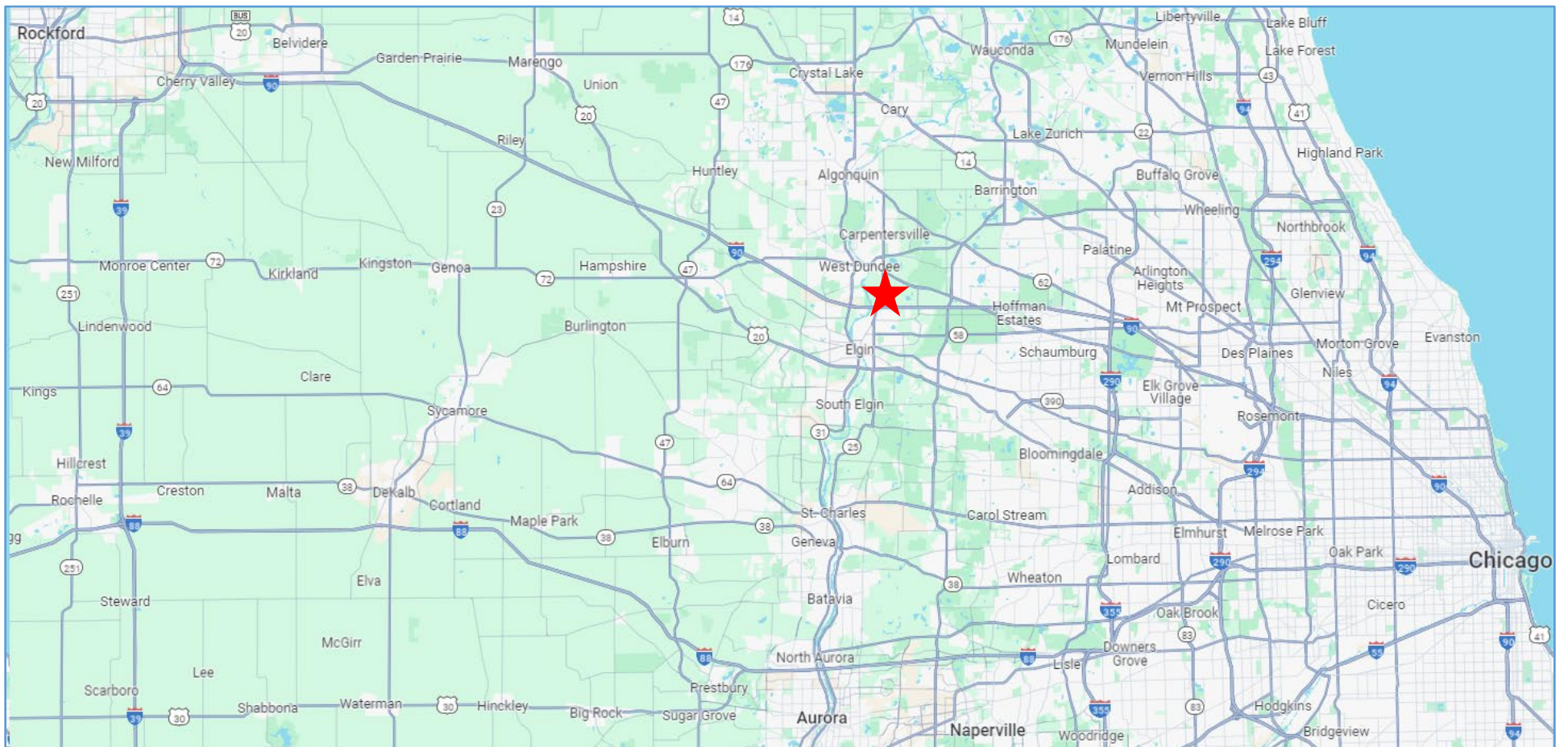


# FOR LEASE

800 Dundee Ave. (Route 25)  
East Dundee, IL



Adam Neisendorf  
(847) 428-1000 ext. 228  
aneisendorf@ploteproperties.com



**For property information and to setup a showing,  
please call Adam Neisendorf  
(847) 428-1000 ext. 228**

Disclaimer: The information contained in this brochure has been obtained from sources believed to be reliable. While we do not doubt its accuracy, we have not verified it and make no guarantee, warranty, or representation about it. It is your responsibility to independently confirm its accuracy and completeness. All measurements, square footages, and information are approximate and for depiction purposes only. Prices are subject to change at owner's discretion.